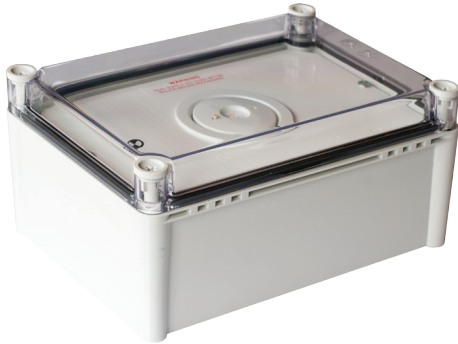


# Spitfire® LED

## Platinum Spitfire LED weatherproof non-maintained

**p-Range**



### Range

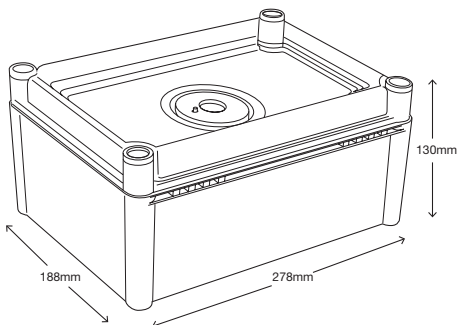
Platinum range

### Product group

Spitfire® LED

### Features

- 5 year warranty
- Superior photometric classification
- LED technology 100,000 hours plus lamp life
- Single or dual LED option
- Low power consumption and LED light source for reduced operation and maintenance costs
- Polycarbonate IP67 weatherproof enclosure
- Advanced technology Lithium iron phosphate battery for long life and low maintenance
- Advanced pulsetime battery charging
- Surface mount
- Low maintenance - ideal for car parks and coolrooms
- Not to be used in locations that will be exposed to direct sunlight



### Standard products

Catalogue no.	Description
SFBWP1LEDP	LED platinum Spitfire single weatherproof surface mount
SFBWP2LEDP	LED platinum Spitfire dual weatherproof surface mount

### Spare parts

Catalogue no.	Description
03-01301P	Battery LiFePO4 3.2V 3.2Ah (suits single LED)
03-01303P	Battery LiFePO4 3.2V 4.5Ah (suits dual LED)

### Dimensions

Length	Width	Height
278mm	188mm	130mm

### Weight

Model	Weight
Standard	2.8kg

### Construction

Part	Construction
Lamp head	White polycarbonate
Weatherproof enclosure	Polycarbonate

### Light source

Model	Light source
Single LED	2W
Dual LED	3W

### Power consumption

Model	Power consumption
Standard	1.0W

Note: Preliminary results

### Photometrics

Model	Class	Classification
Single LED	C0	D40
	C90	D40
Dual LED	C0	D63
	C90	D63

Note: Designed to comply with AS2293 and meet relevant Australian EMC standards

For more information please contact:

**ABB Australia Pty Limited**

Phone: 1300 666 595

Fax: 1300 666 594

E-mail: AU-ABB-Stanilite@abb.com

**[www.stanilite.com.au](http://www.stanilite.com.au)**

**Note:** We reserve the right to make technical changes or modify the contents of this document without prior notice. With regard to purchase orders, the agreed particulars shall prevail. ABB does not accept any responsibility whatsoever for potential errors or possible lack of information in this document.

We reserve all rights in this document and in the subject matter and illustrations contained therein. Any reproduction, disclosure to third parties or utilisation of its contents – in whole or in parts – is forbidden without prior written consent of ABB.

Copyright © 2017 ABB  
All rights reserved